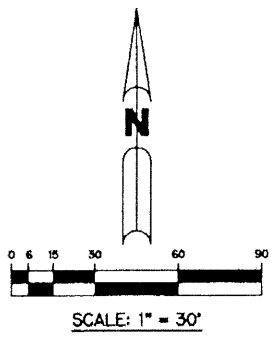
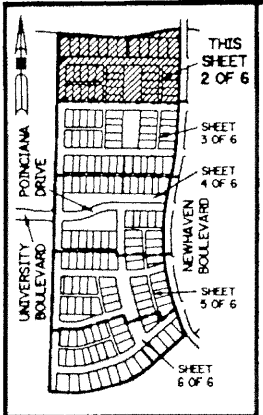


# NEWHAVEN - 7B - PHASE 2 AT ABACOA

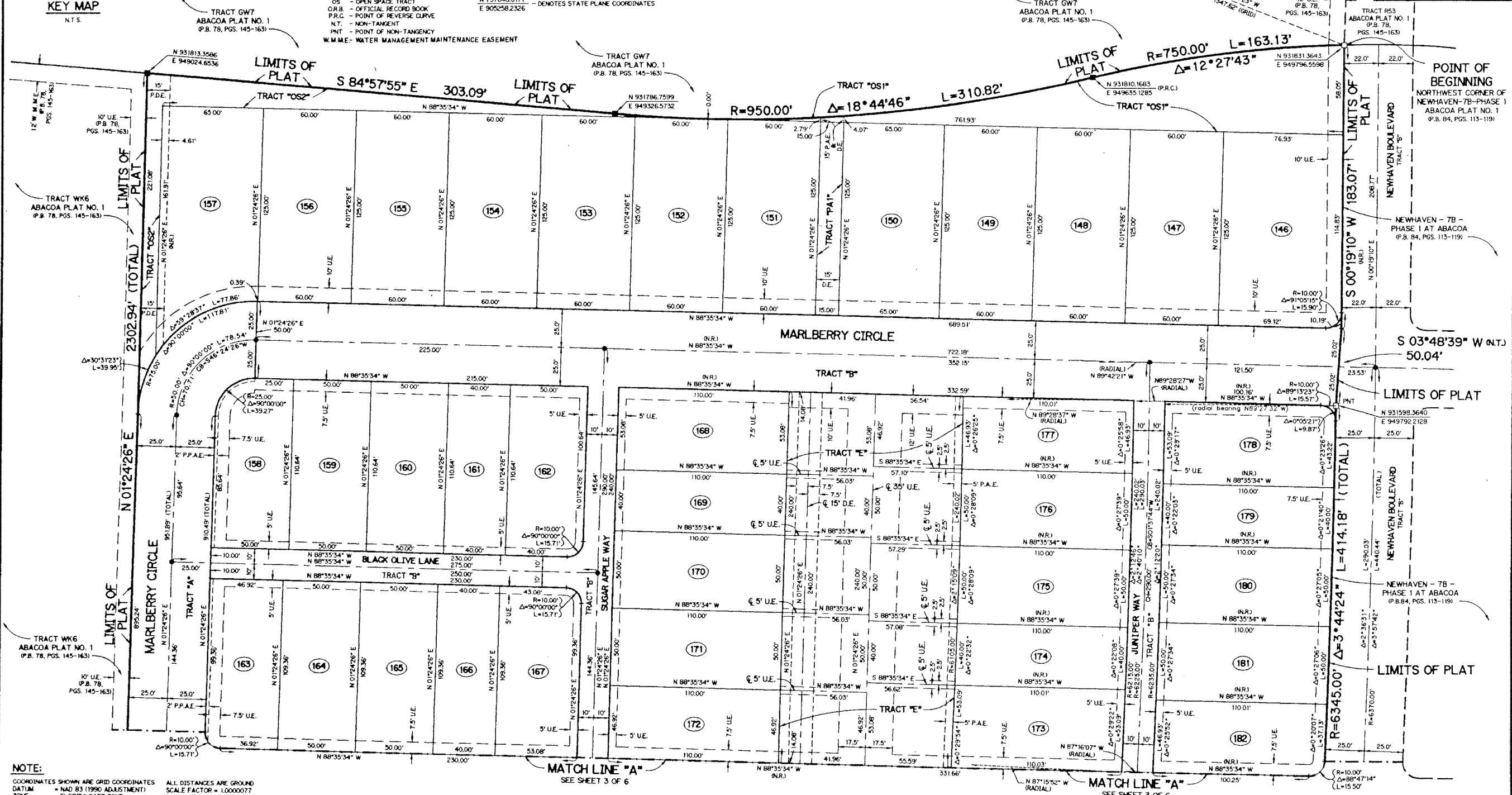
BEING A REPLAT OF A PORTION OF TRACT RN7B ACCORDING TO THE PLAT OF ABACOA PLAT NO. 1, AS RECORDED IN PLAT BOOK 78, PAGES 145 THROUGH 163, INCLUSIVE, OF THE PUBLIC RECORDS OF PALM BEACH COUNTY, FLORIDA. LYING IN SECTION 24, TOWNSHIP 41 SOUTH, RANGE 42 EAST, TOWN OF JUPITER, PALM BEACH COUNTY, FLORIDA.

SHEET 2 OF 6 JULY, 2000

THIS INSTRUMENT PREPARED BY PERRY C. WHITE, P.S.M. 4213, STATE OF FLORIDA LAWSON, NOBLE AND WEBB, INC. ENGINEERS PLANNERS SURVEYORS 420 COLUMBIA DRIVE WEST PALM BEACH, FLORIDA 33409 LB-6674



- LEGEND:**
- FOUND PERMANENT REFERENCE MONUMENT, PSM #4213
  - SET PERMANENT REFERENCE MONUMENT, PSM #4213
  - SET PERMANENT CONTROL POINT, PSM #4213
  - Δ - DELTA ANGLE
  - ⊙ - CENTERLINE
  - DRAINAGE EASEMENT
  - EXEMPT ACREAGE
  - L - ARC LENGTH
  - L.A.E. - LIMITED ACCESS EASEMENT
  - N.R. - NOT RADIAL
  - N.T.S. - NOT TO SCALE
  - O.S. - OPEN SPACE TRACT
  - O.R.B. - OFFICIAL RECORD BOOK
  - P.R.C. - POINT OF REVERSE CURVE
  - N.T. - NON-TANGENT
  - PNT - POINT OF NON-TANGENCY
  - W.M.M.E. - WATER MANAGEMENT MAINTENANCE EASEMENT
  - P.D.E. - PUBLIC DRAINAGE EASEMENT
  - PA - PEDESTRIAN ACCESS TRACT
  - P.A.E. - PEDESTRIAN ACCESS EASEMENT
  - P.P.A.E. - PUBLIC PEDESTRIAN ACCESS EASEMENT
  - P.B. - PLAT BOOK
  - P.S. - PAGES
  - P.S.M. - PROFESSIONAL SURVEYOR AND MAPPER
  - R - RADIUS
  - RES. - RESIDENTIAL
  - R/W - RIGHT-OF-WAY
  - S.T. - SURVEY TIE
  - U.E. - UTILITY EASEMENT
  - N 737648.0171 E 905258.2326 - DENOTES STATE PLANE COORDINATES



**NOTE:**

COORDINATES SHOWN ARE GRID COORDINATES DATUM = NAD 83 (1990 ADJUSTMENT) ZONE = FLORIDA EAST ZONE LINEAR UNIT = U.S. SURVEY FEET COORDINATE SYSTEM 1983 STATE PLANE TRANSVERSE MERCATOR PROJECTION

ALL DISTANCES ARE GROUND SCALE FACTOR = 1.0000077 N 89°21'50" E (PLAT BEARING) N 89°21'50" E (GRID BEARING) 0°00'00" = BEARING ROTATION - COUNTER CLOCKWISE (PLAT TO GRID)